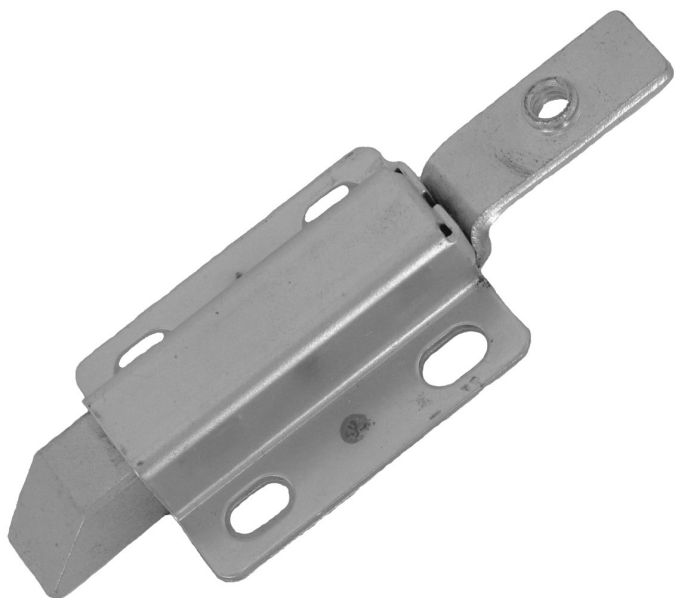


060-0901  
Low Profile  
Plunger Bolt



**DESIGNED FOR:**

- Light duty baggage and compartment doors
- Door weights up to 30 lbs. (13.6 kg)
- Door seal load up to 15 lbs. (6.8 kg)

**FEATURES/BENEFITS:**

- Plunger bolt retraction is independent of link
- .500" (12.7mm) allowable travel
- Low operating efforts
- Corrosion resistant
- Slotted mounting holes for ease of installation

**Global Locations:**

**TriMark Corporation**  
500 Bailey Avenue  
P.O. Box 350  
New Hampton, Iowa 50659  
United States  
Tel: 641-394-3188  
Fax: 641-394-2392  
1-800-447-0343  
www.trimarkcorp.com

**TriMark Europe**  
Cedar Court  
Walker road  
Bardon Hill  
Coalville LE67 1TU  
United Kingdom  
Tel: +44(0)1530 512460  
Fax: +44(0)1530 512461  
www.trimarkeu.com

**TriMark (Xuzhou)**  
Building A5 Jingwu Road  
Xuzhou Economic  
Development Zone  
Xuzhou, Jiangsu  
221004 PR China  
Tel: +86 516 8773 0018  
Fax: +86 516 8773 0058  
www.trimarkcn.com



TriMark. Interactive. Product. Selector



TriMark



TriMark Corporation

**FINISH:**

- Cover, link, plunger bolt - zinc plated with clear chromate conversion coating

**MATERIAL:**

- Cover and link: cold rolled steel or 304 stainless steel
- Plunger bolt: powder metal
- Spring and base plate: stainless steel

**USE WITH:**

- Please refer to our website for related products that are compatible for use with this product

**INSTALLATION:**

- Recommended use of (4) 1/4-20 or M6 type fasteners

**AVAILABLE:**

- Reverse plunger for inward swinging doors (please inquire)

Individual part dimensions are for reference only. Refer to individual part drawings for complete dimensions, specifications, and installation procedures. Engineering assistance and application drawings are available.

**CAUTION:** Latch does not meet FMVSS 206 (ECE R11) load requirements.

For more information visit  
[www.trimarkcorp.com](http://www.trimarkcorp.com)

